



Together We Thrive

Touro Synagogue Annual Commitment | 2025-2026

*An Important Message from
Touro Synagogue's Board of Trustees*

The Moment Is Now

Our Financial Reality

Our congregation has grown by 250+ households over the last five years. However, alongside rising costs due to inflation, insurance, and increased security needs, our revenue has not kept pace, compromising our financial sustainability. The precious time and talent many share so generously with Touro is invaluable, and we treasure these contributions. At the same time, in order to continue offering the spiritual, educational, and communal experiences we all value, we **must collectively increase our annual support.**

We welcome everyone and ask that you make an annual commitment at a level that is meaningful and also aspirational. For the 2025-2026 year, our cost per household is \$2,750 or \$229/month. We ask that those who can give at or above the cost per household level joyfully do so, as these contributions build a strong and secure future for all.

Let's rise to meet this moment.

Thank you for being an integral part of what we are building together.



\$2,750

Cost per Household

*\$229/month**

**Payment amount based on 12 monthly payments.*

Supporting Our Growth

We have always asked our members to give generously and at a level that is meaningful to them. And we continue to do so, offering an incredible range of opportunities for involvement at all stages of life. **Membership contributions enable Touro to thrive 365 days a year.**

Your Support Provides:

730

Households

*250+ New Households
Since 2019!*

**Pastoral Care
from Our Dynamic
Clergy Team**

**Connections to
Tikkun Olam Initiatives**

**Jewish Education
for 220+ Children**

**Opportunities for
Lifelong Learning
and Engagement**

**Upkeep of Our Historic
and Majestic Buildings**

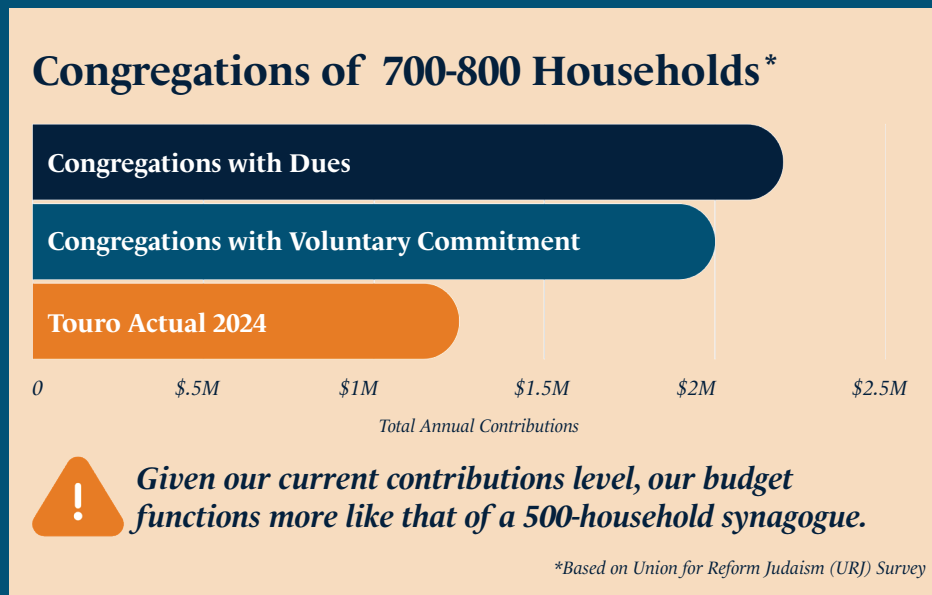
**Weekly Worship
and Shabbat Dinners**

And so much more!

Facing the Moment

While our congregation has grown and our programming is robust, our revenue has not increased accordingly. Membership contributions currently make up 52% of our total revenue — well below the recommended 80% benchmark for a financially healthy congregation. **This gap challenges Touro's financial sustainability.** Though we efficiently manage our lean budget, the size and vibrancy of our community require a budget that supports meaningful investment in our people and programs.

Want more information? Please visit About Us > Membership FAQs at TouroSynagogue.com.



The Facts:

Touro Synagogue's 2025-2026 Annual Budget: \$2.5M
Annual Support Needed to Cover 80% of Budget: \$2.0M
Household Cost Formula: $\$2.0\text{M} / 730 \text{ Households} \approx \$2,750$

Current:

Our current Annual Support only covers 52% of our budget.



Moving Forward Together

To sustain our buildings and vibrant community, the average annual amount of revenue we must raise per household is \$2,750. Touro is proud to be a home for over 700 Jewish households (more than 1,800 individuals!), some of whom can give at or above this level, and some who cannot. In order to foster a sense of belonging among us all, regardless of financial capability, **it is crucial that those who are able to support Touro at the cost per household do so.** It's one of the most meaningful ways we live our values. As you reflect on your annual commitment for this year, please consider the cost per household and the patron levels below. We need your generosity and intention in order to make Touro work for all.

\$2,750

Cost per Household

*\$229/month**

Your 2025-2026 Annual Commitment:

Member Support Level	Annual	Monthly
Cost Per Household	\$2,750	\$229/mo*

Patron Support Level	Annual	Monthly
Ozrim Helpers <i>Cost per Household + Cover Part of an Additional Household</i>	\$3,660+	\$305+/mo*
Bonim Builders <i>Cost per Household + Cover an Additional Household</i>	\$5,400+	\$450+/mo*
Tomchin Supporters	\$7,200+	\$600+/mo*
Amudim Pillars	\$10,000+	\$833+/mo*
Giborim Heroes	\$18,000+	\$1,500+/mo*

If the cost per household is not within your reach this year, please consider a meaningful increase from your past support. Some suggestions:

- **New Members and Young Households:** \$1,800+ or \$150+/month*
- **Out-of-Town Members:** \$720+ or \$60+/month*
- **Students:** \$250+ or \$21+/month*

**Payment amount based on 12 monthly payments.*

Let's rise to meet this moment, together.

Visit TouroSynagogue.com/AnnualCommitment Today!

Submit Your Pledge Online

We're excited to introduce ShulCloud, our online membership portal. With a ShulCloud account, you'll have access to a membership directory, manage your payments, and more!

Credit Card and E-Check Options Available.

Please log in to ShulCloud or contact the Touro Synagogue Office at 504-895-4843 if you need assistance accessing your account.

